



\$2.50

WISECO CORPORATE HEADQUARTERS:

U.S.A.
800-321-1364
7201 Industrial Park Blvd.
Mentor, Ohio 44060-5396
Tech Info: 440-951-6600 • Fax: 440-951-6606
wiseco.com

DISTRIBUTION WAREHOUSES:

Canada
888-494-7326
948 Keyes Dr., P.O. Box 1513
Woodstock, Ontario Canada N4S-0A7
Tech Info: 519-537-6281 • Fax: 519-537-8508

EUROPE

+31 252 687-713
Pesetaweg 32 • 2153 PJ, Nieuw Vennep
The Netherlands
Fax: +31 252 689-252
info@wiseco-europe.com
wiseco-europe.com

*Thank you for supplying the terrific photos
used throughout this catalog:*

- Shooters Images (Covers & inside back cover)
- Ryan Nau

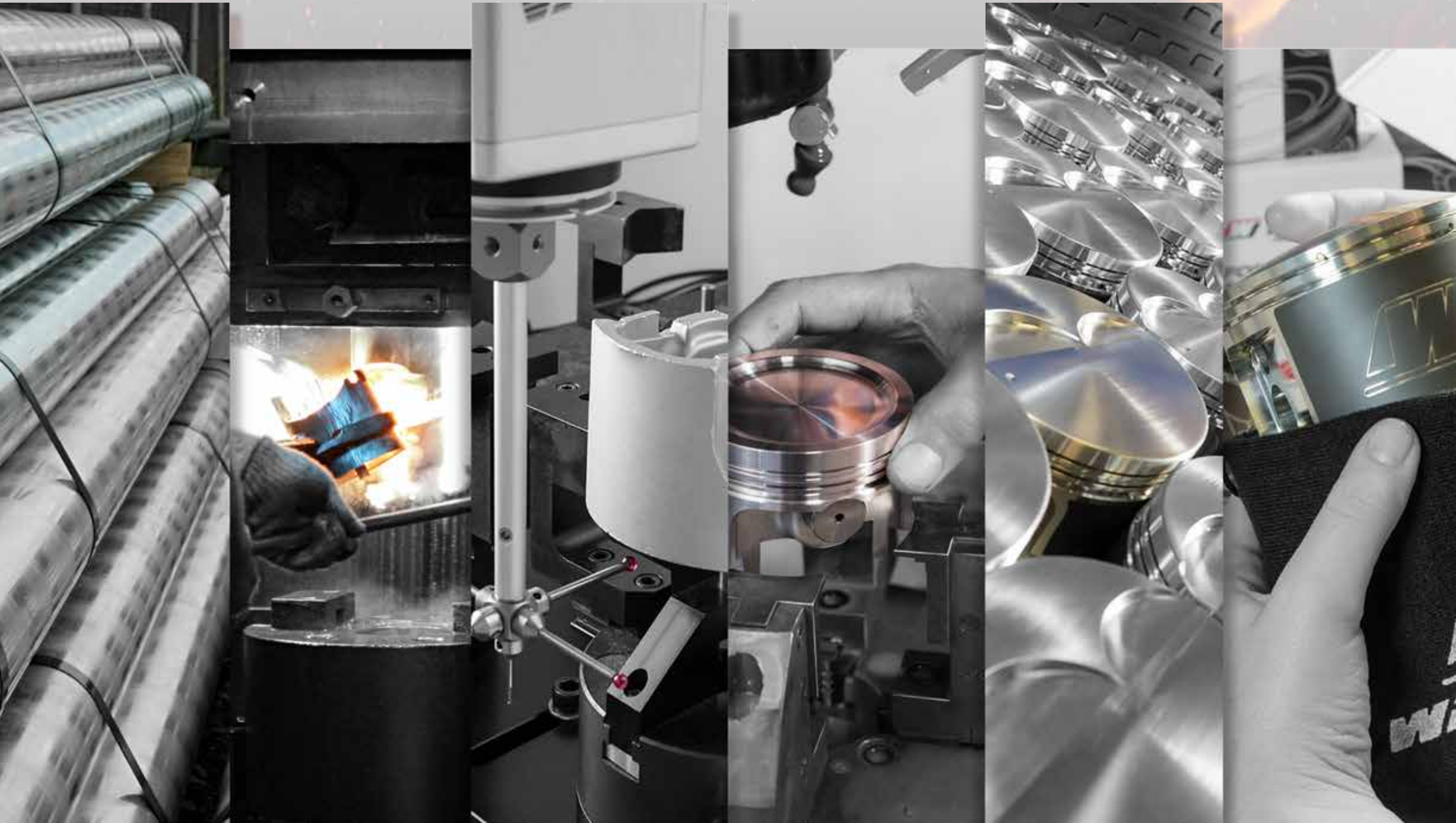
W WISECO

**V-Twin & Metric Cruiser
High-Performance Engine Parts 2016**



Made with pride
in the U.S.A.

VT16





Fuel Management Controllers	7
Buell - White Lightning / Thunderbolt / Firebolt	8
XR750.....	8
Evo Sportster.....	8
Panhead & Shovelhead.....	12
Evo Big Twin.....	12
Twin Cam.....	16
V-Rod	22
Honda VTX 1800.....	24
Indian.....	24
Yamaha Star Bolt & Road Star.....	24
Piston profile images	26
Gaskets	30
Ring Buyer's Guide	32
Replacement Piston Pins, Honing Brushes & Decals.....	33
Terms & Conditions of Sale.....	34

Performance Matters



Complete Top End Rebuild Kits for V-Twin & Metric Cruisers

Wiseco combines the most technologically advanced pistons on the market with high-performance top end gasket kits. *Everything you need in one package.*

VT Kits include only premium materials, producing the best sealing technology available, exceeding OEM standards.

Fuel Management Controllers



Change your fuel injection quickly and easily by installing a Wiseco Fuel Management Controller. Dial in your maximum potential!

Features	Benefits
<ul style="list-style-type: none"> Pre-programmed, Plug N' Play installation 	<ul style="list-style-type: none"> Notable improvement right out of the box
<ul style="list-style-type: none"> Easy push button operation 	<ul style="list-style-type: none"> No computer or dyno required
<ul style="list-style-type: none"> Easy air/fuel ratio adjustment 	<ul style="list-style-type: none"> Easily adjusts for modifications - intake, exhaust, cams, etc.
<ul style="list-style-type: none"> 3 basic zones of operation 	<ul style="list-style-type: none"> Tuning is similar to carburetors
<ul style="list-style-type: none"> Uses OEM base code 	<ul style="list-style-type: none"> Does not alter base code

\$224.95 **NOTE:** Other street fuel controllers (not listed here) are available - see wiseco.com for a complete list.

Fuel Controllers			
Make	Model	Years	Part #
Buell	All Models	1999-2007	FMC035
Ducati	All (except P-8 ECU)	1999-05	FMC044
Harley	All Big Twin Harleys	1995-05	FMC051
Harley	Dyna	2006-11	FMC052
Harley	Dyna	2012-15	FMC150
Harley	Softail	2006	FMC053
Harley	Softail	2007-11	FMC054
Harley	Softail	2012-14	FMC150
Harley	Touring	2006	FMC055
Harley	Touring	2007	FMC056
Harley	Touring	2008-09	FMC057
Harley	Touring	2010-13	FMC142
Harley	V-ROD	2002-07	FMC058
Harley	V-ROD	2008-11	FMC059
Harley	V-ROD	2012-15	FMC151
Harley	Sportster	2007-13	FMC060
Honda	VTX 1800	2002-09	FMC073
Kawasaki	VN 900	2006-14	FMC085
Kawasaki	VN1500/VN1600	1999-08	FMC086
Kawasaki	VN1700	2009-14	FMC145
Kawasaki	Meanstreak	2002-08	FMC087
Kawasaki	VN 2000 (no CA)	2004-08	FMC088
Polaris	Victory	2000-07	FMC089
Polaris	Victory/Vision	2008-15	FMC090
Suzuki	Marauder 1600 / M95	2004-06	FMC108
Suzuki	M109R	2006-15	FMC109
Suzuki	C90, M90	2009-13	FMC168
Suzuki	Boulevard C50, C90, M50	2004-08	FMC110
Suzuki	Boulevard C50, M50	2009-15	FMC146
Triumph	Rocket III	2005-12	FMC112
Yamaha	Road Star	2008-14	FMC118
Yamaha	Road Warrior	2002-09	FMC119
Yamaha	Roadliner / Stratoliner	2006-14	FMC120
Yamaha	V-Star 950	2009-15	FMC127
Yamaha	V-Star 1300	2007-15	FMC128

To order controllers that are emissions legal per **CARB EO D-664** for street legal use in California, add -CA at end of part number. (i.e. FMC128-CA)

Model & Description	Years	Comp. Ratio	Stock Bore x Stroke	Displ. cc	Bore Size	Piston Type & Coatings	Cylinder & Machining Requirements	Top End Kit with Gaskets		Top End Kit without Gaskets	Single Piston	Ring Set	Piston Pin	Circlip	Top End Gasket Kit	Dome Configuration & Volume	Intake Pocket Diameter	Intake Pocket Depth	Exhaust Pocket Diameter	Exhaust Pocket Depth
200 Buell • 73 Cubic Inch																				
S1 White Lightning S3/S3T Thunderbolt <i>Buell models with Thunder storm Heads installed</i>	1996-1998 1997-2002	10:1	3.498 x 3.812	1200.0 1207.0 1214.0	3.498 3.508 3.518		Deglaze / Hone Bore & Hone Bore & Hone			K1700 K1701 K1702 \$320.00	4728PS 4728P1 4728P2 \$160.00	3497X 3507X 3517X	S530	W5731	W5918	Positive Dome +7cc	2.100	0.150	2.100	0.150
200 Buell • 88 Cubic Inch																				
XB12R Firebolt XB12S Lightening	2004-2009 2004-2009	12:1	3.498 x 3.812	1207.0	3.508		Bore & Hone	VT1738		K1738 \$330.00	4832P1 \$165.00	3507X	S572	W5731	W6392	Positive Dome +12.3cc	2.100	0.167	2.100	0.167
200 Buell • 88 Cubic Inch																				
XB12R Firebolt XB12S Lightening	2004-2009 2004-2009	10.5:1	3.498 x 3.812	1426.0	3.813		Cyl. Required Crank Machining			K1735 \$330.00	4830PS \$165.00	38125XN	S572	W5731	W6003 2004-2014	Inverted Dome -6.8cc	2.100	0.167	2.100	0.167
										XN Ring designed for Nikasil bores, aftermarket cyl. req'd										
Harley-Davidson®																				
XR750	1972-2015	Max.	3.162 x 2.983	768.0	3.162	ArmorPlating™ ArmorGlide® Strutted forging Gas porting Tool steel wrist pin	Deglaze / Hone or Replating				10574M08031 \$300.00	3162VS	S743	W5731		Large Dome +32.9cc	0.195	1.952	1.635	0.071
										Grand National Race only piston										
Harley-Davidson®																				
883 EVO Sportster	1986-2014	8.5:1	3.498 x 3.812	1200.0 1207.0 1214.0	3.498 3.508 3.518		Deglaze / Hone Bore & Hone Bore & Hone			K1723 K1724 K1725 \$320.00	4691PS 4691P1 4691P2 \$160.00	3497X 3507X 3517X	S530	W5731	W5911 1986-1987 W5912 1988-1990 W5918 1991-2003 W6378 2004-2014	Inverted Dish -13.7cc	2.100	0.215	2.100	0.215
										2008-2014 models require 1200cc Sportster cylinders										
Harley-Davidson®																				
883 EVO Sportster	1986-2014	9.5:1	3.498 x 3.812	1200.0 1207.0 1214.0	3.498 3.508 3.518 3.528 3.538		Deglaze / Hone Bore & Hone Bore & Hone Bore & Hone Bore & Hone			K1655 K1656 K1657 K1658 K1659 \$320.00	4718PS 4718P1 4718P2 4718P3 4718P4 \$160.00	3497X 3507X 3517X 3527X 3537X	S530	W5731	W5911 1986-1987 W5912 1988-1990 W5918 1991-2003 W6378 2004-2014	Inverted Dome -11.2cc	2.100	0.215	2.100	0.215
										2008-2014 models require 1200cc Sportster cylinders										

Model & Description	Years	Comp. Ratio	Stock Bore x Stroke	Displ. cc	Bore Size	Piston Type & Coatings	Cylinder & Machining Requirements	Top End Kit with Gaskets		Top End Kit without Gaskets	Single Piston	Ring Set	Piston Pin	Circlip	Top End Gasket Kit	Dome Configuration & Volume	Intake Pocket Diameter	Intake Pocket Depth	Exhaust Pocket Diameter	Exhaust Pocket Depth
Harley-Davidson®																				
883 EVO Sportster	1986-2014	10:1	3.498 x 3.812	1200.0 1207.0 1214.0	3.498 3.508 3.518		Deglaze / Hone Bore & Hone Bore & Hone			K1682 K1683 K1684 \$320.00	4719PS 4719P1 4719P2 \$160.00	3497X 3507X 3517X	S530	W5731	W5911	Inverted Dome -8.5cc	2.100	0.215	2.100	0.215
															1986-1987					
															W5912					
															1988-1990					
															W5918					
															1991-2003					
										W6378										
2008-2014 models require 1200cc Sportster cylinders					2004-2015															
Harley-Davidson®																				
1000 Iron Sportster	1972-1985	10:1	3.188 x 3.812	1000.0 1003.0 1006.0 1016.0 1022.0	3.188 3.198 3.208 3.218 3.228		Deglaze / Hone Bore & Hone Bore & Hone Bore & Hone Bore & Hone			K1600 K1601 K1602 K1603 K1604 \$270.00	4011PS 4011P1 4011P2 4011P3 4011P4 \$135.00	3188X 3198X 3208X 3218X 3228X	S521	CW20	W5910 72-Early 73	Large Dome +50.7cc	2.000	0.086	None	None
															W5915 Late 1973- Early 1976					
															W6024 Late 1976- 1985					
Harley-Davidson® • 73 Cubic Inch																				
1100 EVO Sportster 1200 EVO Sportster All EVO Sportster and Buell models with stock 1200 cylinder heads	1986-1987 1988-2003	9:1	3.498 x 3.812	1200.0 1207.0 1214.0 1221.0	3.498 3.508 3.518 3.528		Deglaze / Hone Bore & Hone Bore & Hone Bore & Hone			K1660 K1661 K1662 K1663 \$320.00	4720PS 4720P1 4720P2 4720P3 \$160.00	3497X 3507X 3517X 3527X	S530	W5731	W5911 1986-1987	Flat Top -2.8cc	2.100	0.215	2.100	0.215
															W5912 1988-1990					
															W5918 1991-2003					
Harley-Davidson® • 73 Cubic Inch																				
1100 EVO Sportster 1200 EVO Sportster All EVO Sportster and Buell models with stock 1200 cylinder heads	1986-1987 1988-2003	10.5:1	3.498 x 3.812	1200.0 1207.0 1214.0 1221.0	3.498 3.508 3.518 3.528		Deglaze / Hone Bore & Hone Bore & Hone Bore & Hone			K1685 K1686 K1687 K1688 K1689 \$320.00	4721PS 4721P1 4721P2 4721P3 4721P4 \$160.00	3497X 3507X 3517X 3527X 3537X	S530	W5731	W5911 1986-1987	Positive Dome +6cc	2.100	0.215	2.100	0.215
															W5912 1988-1990					
															W5918 1991-2003					
Harley-Davidson® • 73 Cubic Inch																				
1200 Sportster	2004-2014	10.5:1	3.498 x 3.812	1200.0 1207.0 1214.0	3.498 3.508 3.518		Deglaze / Hone Bore & Hone Bore & Hone	VT1746 VT1747 VT1748		K1746 K1747 K1748 \$330.00	4891PS 4891P1 4891P2 \$165.00	3497X 3507X 3517X	S534	W5731	W6378 2004-2015	Positive Dome +3.6cc	2.100	0.167	2.100	0.167
Harley-Davidson® • 73 Cubic Inch																				
1200 Sportster	2004-2014	12:1	3.498 x 3.812	1200.0 1207.0	3.498 3.508		Bore & Hone	VT1738		K1738 \$330.00	4832P1 \$165.00	3507X	S572	W5731	W6378 2004-2015	Positive Dome +12.3cc	2.000	0.167	2.000	0.167
Harley-Davidson® • 88 Cubic Inch																				
1200 Sportster	2004-2014	10.5:1	3.498 x 3.812	1426.0	3.813		Cylinder Required Crankcase Machining			K1735 \$330.00	4830PS \$165.00	38125XN	S572	W5731	W6003 2004-2015	Inverted Dome -6.8cc	2.100	0.167	2.100	0.167
										XN Ring designed for Nikasil bores, aftermarket cyl. req'd										

Model & Description	Years	Comp. Ratio	Stock Bore x Stroke	Displ. cc	Bore Size	Piston Type & Coatings	Cylinder & Machining Requirements	Top End Kit with Gaskets		Top End Kit without Gaskets	Single Piston	Ring Set	Piston Pin	Circlip	Top End Gasket Kit	Dome Configuration & Volume	Intake Pocket Diameter	Intake Pocket Depth	Exhaust Pocket Diameter	Exhaust Pocket Depth																
Harley-Davidson® 1200 FL-FLH • 74 Cubic Inch																																				
Panhead Shovelhead	1948-1965 1966-1977	9:1	3.438 x 3.698	1200.0	3.437		Deglaze / Hone Bore & Hone Bore & Hone Bore & Hone Bore & Hone Bore & Hone Bore & Hone Bore & Hone			K1605	4012PS	3437X	S521	W5731	W5909 1948-1965 W5916 1966-1977	Large Dome +52.0cc	2.045	0.087	1.800	0.089																
				1213.0	3.447					K1606	4012P1	3447X																								
				1220.0	3.457					K1607	4012P2	3457X																								
				1227.0	3.467					K1608	4012P3	3467X																								
				1234.0	3.477					K1609	4012P4	3477X																								
				1241.0	3.487					K1610	4012P5	3487X																								
				1249.0	3.497					K1611	4012P6	3497X																								
				1263.0	3.517					K1612	4012P8	3517X																								
										\$270.00	\$135.00																									
				K1610, K1611 & K1612 fit Shovelhead only																																
Harley-Davidson® • 80 Cubic Inch																																				
1340 Shovelhead	1978-1984	7:1	3.497 x 4.250	1340.0	3.497		Deglaze / Hone Bore & Hone Bore & Hone Bore & Hone Bore & Hone			K1613	4729PS	3497X	S535	W5731	W5916 1978-1984	Positive Dome +29.7cc	2.000	0.130	1.870	0.090																
				1345.0	3.507					K1614	4729P1	3507X																								
				1353.0	3.517					K1615	4729P2	3517X																								
				1361.0	3.527					K1616	4729P3	3527X																								
				1367.0	3.537					K1617	4729P4	3537X																								
										\$300.00	\$150.00																									
Harley-Davidson® • 80 Cubic Inch																																				
1340 Shovelhead	1978-1984	8.5:1	3.497 x 4.250	1340.0	3.497		Deglaze / Hone Bore & Hone Bore & Hone Bore & Hone			K1767	4970PS	3497X	S535	W5731	W5916 1978-1984	Large Dome +44.5cc	2.000	0.130	1.870	0.090																
				1353.0	3.517					K1769	4970P2	3517X																								
				1361.0	3.527					K1770	4970P3	3527X																								
										\$300.00	\$150.00																									
				Harley-Davidson® • 80 Cubic Inch																																
				1340 Shovelhead	1978-1984					9.5:1	3.497 x 4.250	1340.0									3.497		Deglaze / Hone Bore & Hone Bore & Hone Bore & Hone Bore & Hone			K1623	4730PS	3497X	S535	W5731	W5916 1978-1984	Large Dome +56.0cc	2.000	0.115	1.870	0.085
1345.0	3.507	K1624	4730P1			3507X																														
1353.0	3.517	K1625	4730P2			3517X																														
1361.0	3.527	K1626	4730P3			3527X																														
1367.0	3.537	K1627	4730P4			3537X																														
		\$300.00	\$150.00																																	
Harley-Davidson® • 80 Cubic Inch																																				
1340 EVO Big Twin	1984-1999	8.5:1	3.498 x 4.250	1340.0	3.498		Deglaze / Hone Bore & Hone Bore & Hone Bore & Hone Bore & Hone			K1640	4722PS	3497X	S534	W5731	W5914 1984-1991 W5917 1992-1999	Flat Top -1.5cc	2.000	0.178	2.000	0.178																
				1345.0	3.508					K1641	4722P1	3507X																								
				1353.0	3.518					K1642	4722P2	3517X																								
				1361.0	3.528					K1643	4722P3	3527X																								
				1369.0	3.538					K1644	4722P4	3537X																								
										\$300.00	\$150.00																									

Model & Description	Years	Comp. Ratio	Stock Bore x Stroke	Displ. cc	Bore Size	Piston Type & Coatings	Cylinder & Machining Requirements	Top End Kit with Gaskets		Top End Kit without Gaskets	Single Piston	Ring Set	Piston Pin	Circlip	Top End Gasket Kit	Dome Configuration & Volume	Intake Pocket Diameter	Intake Pocket Depth	Exhaust Pocket Diameter	Exhaust Pocket Depth
Harley-Davidson® • 80 Cubic Inch																				
1340 EVO Big Twin	1984-1999	10:1	3.498 x 4.250	1340.0	3.498		Deglaze / Hone			K1665	4724PS 4725PS	3497X	S534	W5731	W5914 1984-1991 W5917 1992-1999	Positive Dome +12.9cc	2.080	0.143	1.740	0.138
				1342.0	3.503		Bore & Hone			K1675	4724P05 4725P05	3504X								
				1345.0	3.508		Bore & Hone			K1666	4724P1 4725P1	3507X								
				1353.0	3.518		Bore & Hone			K1667	4724P2 4725P2	3517X								
				1361.0	3.528		Bore & Hone			K1668	4724P3 4725P3	3527X								
				1369.0	3.538		Bore & Hone			K1669 \$320.00	4724P4 4725P4 \$160.00	3537X								
				Kits contain one front 4724 and one rear 4725 piston																
Harley-Davidson® • 80 Cubic Inch																				
1340 EVO Big Twin <i>Fits Screamin Eagle Cylinder Heads</i>	1984-1999	10.5:1	3.498 x 4.250	1342.0	3.503		Bore & Hone Bore & Hone Bore & Hone			K1714	4778P05 4779P05	3504X	S534	W5731	W5914 1984-1991 W5917 1992-1999	Positive Dome +6.5cc	2.080	0.155	1.740	0.155
				1345.0	3.508					K1715	4778P1 4779P1	3507X								
				1353.0	3.518					K1716	4778P2 4779P2 \$320.00	3517X \$160.00								
				Kits contain one front 4726 & one rear 4727 piston																
Harley-Davidson® • 80 Cubic Inch																				
1340 EVO Big Twin	1984-1999	11:1	3.498 x 4.250	1340.0	3.498		Deglaze / Hone			K1690	4726PS 4727PS	3497X	S534	W5731	W5914 1984-1991 W5917 1992-1999	Positive Dome +19.0cc	2.080	0.165	1.740	0.165
				1342.0	3.503		Bore & Hone			K1691	4726P05 4727P05	3504X								
				1345.0	3.508		Bore & Hone			K1692	4726P1 4727P1	3507X								
				1353.0	3.518		Bore & Hone			K1693	4726P2 4727P2	3517X								
				1361.0	3.528		Bore & Hone			K1694 \$311.36	4726P3 4727P3 \$160.00	3527X								
Kits contain one front 4726 and one rear 4727 piston																				

Model & Description	Years	Comp. Ratio	Stock Bore x Stroke	Displ. cc	Bore Size	Piston Type & Coatings	Cylinder & Machining Requirements	Top End Kit with Gaskets	Top End Kit without Gaskets	Single Piston	Ring Set	Piston Pin	Circlip	Top End Gasket Kit	Dome Configuration & Volume	Intake Pocket Diameter	Intake Pocket Depth	Exhaust Pocket Diameter	Exhaust Pocket Depth
Harley-Davidson® • 88 Cubic Inch																			
1340 EVO Big Twin	1984-1999	9.25:1	3.498 x 4.250	1438.0	3.625		Cylinder Required Crankcase Machining <i>Must use aftermarket cases on 1990-1995 models</i>		K1750 \$330.00	4594PS \$165.00	3625X	S534	W5731	W6382 1984-1991 W6381 1992-1999	Flat Top -2.0cc	2.120	0.202	2.120	0.202
Harley-Davidson® • 93.4 Cubic Inch																			
1340 EVO Big Twin	1984-1999	9.5:1	3.498 x 4.250	1530.0	3.740		Resleeve 3035FA Crankcase Machining <i>Must use aftermarket cases on 1990-1995 models</i>		K1749 \$330.00	4661PS \$165.00	3740XH	S572	W5731	W6380 1984-1991 W6379 1992-1999	Flat Top -2.0cc	2.000	0.178	2.000	0.178
Harley-Davidson® • 88 Cubic Inch																			
Twin Cam 4.000" Stroke	1999-2006	10.5:1	3.750 x 4.000	1448.0	3.750	Strutted Forging	Deglaze / Hone	VT2726	K2726 \$350.00	4995PS \$175.00	3750VM	S594	W5752	W6004	Positive Dome +19.5cc	2.000	0.183	2.000	0.183
Harley-Davidson® • 95 Cubic Inch																			
Twin Cam 4.000" Stroke	1999-2006	9:1	3.750 x 4.000	1546.0 1550.0 1554.0	3.875 3.880 3.885	ArmorPlating™ ArmorGlide® Strutted Forging Chrome Pin VM Ring Technology	Bore & Hone Bore & Hone Bore & Hone	VT2719 VT2720 VT2721 Re-calibration required	K2719 K2720 K2721 \$350.00	4994PS 4994P05 4994P1 \$175.00	3875VM 3880VM 3885VM	S594	W5752	W5786	Flat Top -2cc	2.000	0.180	2.000	0.180
Harley-Davidson® • 95 Cubic Inch																			
Twin Cam 4.000" Stroke	1999-2006	9.5:1	3.750 x 4.000	1546.0 1554.0	3.875 3.885	ArmorPlating™ ArmorGlide® Strutted Forging Chrome Pin VM Ring Technology	Bore & Hone Bore & Hone	VT2764 VT2766 Re-calibration required		4999PS 4999P1 \$175.00	3875VM 3885VM	S594	W5752	W5786	Positive Dome +4.6cc	2.000	0.183	2.000	0.183
Harley-Davidson® • 95 Cubic Inch																			
Twin Cam 4.000" Stroke	1999-2006	10.5:1	3.750 x 4.000	1546.0 1550.0 1554.0 1562.0	3.875 3.880 3.885 3.895	ArmorPlating™ ArmorGlide® Strutted Forging Chrome Pin VM Ring Technology	Bore & Hone Bore & Hone Bore & Hone Bore & Hone	VT2709 VT2710 VT2711 VT2712 Re-calibration required		4993PS 4993P05 4993P1 4993P2 \$175.00	3875VM 3880VM 3885VM 3895VM	S594	W5752	W5786	Positive Dome +14cc	2.000	0.183	2.000	0.183
Harley-Davidson® • 97 Cubic Inch																			
Twin Cam 4.000" Stroke <i>Fits Screamin Eagle Cylinder Heads starting 2011</i>	1999-2014	10:1	3.750 x 4.000	1596.0	3.937	ArmorPlating™ ArmorGlide®	Bore & Hone or Cylinder Required	VT2780 Re-calibration required	K2780 \$390.00	40147PS \$195.00	3937GFX	S756	W5752	W6957	Positive Dome +6.5cc	2.250	0.205	2.250	0.205

Model & Description	Years	Comp. Ratio	Stock Bore x Stroke	Displ. cc	Bore Size	Piston Type & Coatings	Cylinder & Machining Requirements	Top End Kit with Gaskets		Top End Kit without Gaskets	Single Piston	Ring Set	Piston Pin	Circlip	Top End Gasket Kit	Dome Configuration & Volume	Intake Pocket Diameter	Intake Pocket Depth	Exhaust Pocket Diameter	Exhaust Pocket Depth
Harley-Davidson® • 100 Cubic Inch																				
Twin Cam 4.000" Stroke	1999-2014	10.5:1	3.750 x 4.000	1650.0	4.000	ArmorPlating™ ArmorGlide® Strutted Forging	Cylinder Required or Resleeve 3209FA Crankcase Machining	VT1760 Re-calibration required		K1760 \$340.00	4925PS \$170.00	4000GFX	S594	W5752	W6274	Positive Dome +8.5cc	2.150	0.205	2.150	0.205
Harley-Davidson® • 107 Cubic Inch																				
Twin Cam 4.000" Stroke	1999-2014	10.5:1	3.750 x 4.000	1752.0	4.125	ArmorPlating™ ArmorGlide® Strutted Forging	Cylinder Required Crankcase Machining	VT1759 Re-calibration required		K1759 \$340.00	4923PS \$170.00	4127GFX	S594	W5752	W6438	Positive Dome +3.7cc	2.150	0.205	2.150	0.205
Harley-Davidson® • 113 Cubic Inch																				
Twin Cam 4.000" Stroke Fits Screamin Eagle Cylinder Heads starting 2011	1999-2014	10.5:1	3.750 x 4.000	1860.0	4.250	ArmorPlating™ ArmorGlide®	Cylinder Required Crankcase Machining	VT2769 Re-calibration required Kits contain front and rear piston		K2769 \$380.00	40024PS front 40025PS rear \$190.00	4250VQ	S756	W5752	TBA	Positive Dome +7.5cc	2.180	0.208	1.900	0.190
										K2772 \$380.00	40024PS front 40025PS rear \$190.00	4250VQA TiN coated rings								
									TiN coated rings included for Nikasil bore only											
Harley-Davidson® • 103 Cubic Inch																				
Twin Cam 4.375" Stroke Fits Screamin Eagle Cylinder Heads starting 2011 Late model Twin Cam using a 4.375" crankshaft	1999-2014	9:1	3.750 x 4.375	1691.0 1700.0	3.875 3.885	ArmorPlating™ ArmorGlide® Strutted Forging Chrome Pin VM Ring Technology	Bore & Hone Bore & Hone	VT2751 VT2753 3.875" is Drop in kit for 2010-2014 103 Re-calibration required		K2751 K2753 \$350.00	4996PS 4996P1 \$175.00	3875VM 3885VM	S594	W5752	W5786	Inverted Dome -11.5cc	2.250	0.205	2.250	0.205
Harley-Davidson® • 103 Cubic Inch																				
Twin Cam 4.375" Stroke Fits Screamin Eagle Cylinder Heads starting 2011 Late model Twin Cam using a 4.375" crankshaft	1999-2014	9.6:1	3.750 x 4.375	1691.0 1695.0 1700.0	3.875 3.880 3.885	ArmorPlating™ ArmorGlide® Strutted Forging Chrome Pin VM Ring Technology	Bore & Hone Bore & Hone Bore & Hone	VT2761 VT2762 VT2763 3.875" is Drop in kit for 2010-2014 103 Re-calibration required		K2761 K2762 K2763 \$350.00	4998PS 4998P005 4998P1 \$175.00	3875VM 3880VM 3885VM	S594	W5752	W5786	Flat Top -2.2cc	2.250	0.205	2.250	0.205

Model & Description	Years	Comp. Ratio	Stock Bore x Stroke	Displ. cc	Bore Size	Piston Type & Coatings	Cylinder & Machining Requirements	Top End Kit with Gaskets	Top End Kit without Gaskets	Single Piston	Ring Set	Piston Pin	Circlip	Top End Gasket Kit	Dome Configuration & Volume	Intake Pocket Diameter	Intake Pocket Depth	Exhaust Pocket Diameter	Exhaust Pocket Depth
Harley-Davidson® • 103 Cubic Inch																			
Twin Cam 4.375" Stroke <i>Fits Screamin Eagle Cylinder Heads starting 2011</i> <i>Late model Twin Cam using a 4.375" crankshaft</i>	1999-2014	10.5:1	3.750 x 4.375	1691.0 1695.0 1700.0	3.875 3.880 3.885	ArmorPlating™ ArmorGlide® Strutted Forging Chrome Pin VM Ring Technology	Bore & Hone Bore & Hone Bore & Hone	VT2754 VT2755 VT5756 <i>3.875" is Drop in kit for 2010-2014 103</i> <i>Twin Cam Re-calibration required</i>	K2754 K2755 K2756 <i>\$360.00</i>	4997PS 4997P005 4997P1 <i>\$180.00</i>	3875VM 3880VM 3885VM	S594	W5752	W5786	Positive Dome +5.0cc	2.250	0.205	2.250	0.205
Harley-Davidson® • 103 Cubic Inch																			
Twin Cam 4.375" Stroke <i>Fits Twin Cooled "Rushmore" Cylinder Heads</i>	2015	10.5:1	3.875 x 4.375	1691.0 1695.0 1700.0	3.875 3.880 3.885	ArmorPlating™ ArmorGlide® Strutted Forging Chrome Pin VM Ring Technology	Deglaze / Hone Bore & Hone Bore & Hone	VT2776 VT2777 VT2778 <i>Re-calibration required</i>	K2776 K2777 K2778	40126PS 40126P005 40126P1 <i>\$195.00</i>	3875VM 3880VM 3885VM	S594	W5752	TBA	Positive Dome +3.0cc	2.250	0.205	2.250	0.205
Harley-Davidson® • 106 Cubic Inch																			
Twin Cam 4.375" Stroke <i>Fits Twin Cooled "Rushmore" Cylinder Heads</i>	2015	10.5:1	3.875 x 4.375	1746.0	3.937	ArmorPlating™ ArmorGlide® Strutted Forging Chrome Pin	Bore & Hone or Cylinder Required	Re-calibration required	K2783	40154PS	3937GFX	S756	W5752		Positive Dome 0.0cc	2.250	0.205	2.250	0.205
Harley-Davidson® • 106 Cubic Inch																			
Twin Cam 4.375" Stroke <i>Fits Screamin Eagle Cylinder Heads starting 2011</i> <i>Late model Twin Cam using a 4.375" crankshaft</i>	1999-2014	10:1	3.750 x 4.375	1746.0	3.937	ArmorPlating™ ArmorGlide®	Bore & Hone or Cylinder Required	VT2781 <i>Re-calibration required</i>	K2781 <i>\$390.00</i>	40148PS <i>\$195.00</i>	3937GFX	S756	W5752	W6274	Flat Top -2.5cc	2.250	0.205	2.250	0.205
Harley-Davidson® • 110 Cubic Inch																			
Twin Cam 4.375" Stroke <i>Fits Screamin Eagle Cylinder Heads starting 2011</i> <i>Late model Twin Cam using a 4.375" crankshaft</i>	1999-2014	10.5:1	3.750 x 4.375	1802.0	4.000	ArmorPlating™ ArmorGlide® Strutted Forging Chrome Pin	Cylinder Required or Resleeve 3209FA Crankcase Machining	VT1757 <i>Re-calibration required</i>	K1757 <i>\$340.00</i>	4918PS <i>\$170.00</i>	4000GFX	S594	W5752	W6274	Flat Top -2.3cc	2.250	0.205	2.250	0.205
Harley-Davidson® • 117 Cubic Inch																			
Twin Cam 4.375" Stroke <i>Fits Screamin Eagle Cylinder Heads starting 2011</i> <i>Late model Twin Cam using a 4.375" crankshaft</i>	1999-2014	10.5:1	3.750 x 4.000	1917.0	4.125	ArmorPlating™ ArmorGlide® Strutted Forging VM Ring Technology	Cylinder Required Crankcase Machining	VT2782 <i>Re-calibration required</i>	K2782 <i>\$360.00</i>	40149PS <i>\$180.00</i>	4127GFX	S756	W5752	W6438	Inverted Dome -5.0cc	2.250	0.205	2.250	0.205

Model & Description	Years	Comp. Ratio	Stock Bore x Stroke	Displ. cc	Bore Size	Piston Type & Coatings	Cylinder & Machining Requirements	Top End Kit with Gaskets		Top End Kit without Gaskets	Single Piston	Ring Set	Piston Pin	Circlip	Top End Gasket Kit	Dome Configuration & Volume	Intake Pocket Diameter	Intake Pocket Depth	Exhaust Pocket Diameter	Exhaust Pocket Depth
Harley-Davidson® • 124 Cubic Inch																				
Twin Cam 4.375" Stroke Late model Twin Cam using a 4.375" crankshaft	1999-2014	10.5:1	3.750 x 4.000	2035.0	4.250	ArmorPlating™ ArmorGlide®	Cylinder Required Crankcase Machining	VT2768 Re-calibration required Kits contain front and rear piston		K2768 \$390.00	40022PS front 40023PS rear \$195.00	4250VQ	S756	W5752	TBA	Flat Top -1.5cc	2.180	0.208	1.900	0.190
										K2773 \$390.00	40022PS front 40023PS rear \$195.00	4250VQA TiN coated rings								
										TiN coated rings included for Nikasil bore only										
Harley-Davidson® • 131 Cubic Inch																				
Twin Cam 4.625" Stroke Also fits Screamin Eagle 110+ and 120R Heads	1999-2014	10.5:1 Calculated using 95cc chambers	3.750 x 4.000	2150.0	4.250	ArmorPlating™ ArmorGlide®	Cylinder Required Crankcase Machining	VT2770 Re-calibration required Kits contain front and rear piston		K2774 \$420.00	40100PS front 40101PS rear \$210.00	4250VQ 4250VQA rings required for Nikasil cylinder bore surface	S756	W5752	W6274	Inverted Dome -8.5cc	2.180	0.208	1.900	0.190
Harley-Davidson® • 131 Cubic Inch																				
Twin Cam 4.625" Stroke Compatible with S&S 124 Cylinder heads	1999-2014	10.5:1 Calculated using 95cc chambers	3.750 x 4.000	2150.0	4.250	ArmorPlating™ ArmorGlide®	Cylinder Required Crankcase Machining	VT2775 Re-calibration required Kits contain one front 40100 and one rear 40101 piston		K2775 \$420.00	40102PS front 40103PS rear \$210.00	4250VQ 4250VQA rings required for Nikasil cylinder bore surface	S756	W5752	W6946	Inverted Dome -11.3cc	2.180	0.208	1.900	0.190
Harley-Davidson® • 80 Cubic Inch																				
V-Rod VRSCA 1320cc Screamin Eagle V-Rod 1250cc VRSCX V-Rod 1250cc V-Rod 1250cc (Will not fit V-Rod Destroyer) Use with stock stroke crankshaft (72mm)	2002-2007 2006 2007 2008 and up	12:1	3.937 x 2.835	1320.0	4.250	ArmorGlide® Strutted Forging	Crankcase Machining	CK139 Kits contain front & rear piston			4792M10795 front 4793M10795 rear \$210.00	4250ZB	S618	W5590	W6022 Head Gasket Kit	Inverted Dome -14.2cc	1.780	0.225	1.540	0.195
Resleeve 3444FAH	W6165 Repl. O-Rings																			
	W6192 Head Gasket will increase CR 1/2 pt.																			

Model & Description	Years	Comp. Ratio	Stock Bore x Stroke	Displ. cc	Bore Size	Piston Type & Coatings	Cylinder & Machining Requirements	Top End Kit with Gaskets	Top End Kit without Gaskets	Single Piston	Ring Set	Piston Pin	Circlip	Top End Gasket Kit	Dome Configuration & Volume	Intake Pocket Diameter	Intake Pocket Depth	Exhaust Pocket Diameter	Exhaust Pocket Depth
Harley-Davidson® • 80 Cubic Inch																			
V-Rod VRSCA 1320cc	2002-2007	14:1	3.937 x 2.835	1320.0	4.250	Strutted Forging Gas ported	Crankcase Machining			9891M10795 9892M10795 \$300.00	4250ZB	S618	W5590	W6022 Head Gasket Kit	Flat Top -7.3cc	1.780	0.195	1.540	0.165
Screamin Eagle V-Rod 1250cc	2006						Resleeve 3444FAH							W6165 Repl. O-Rings					
VRSCX V-Rod 1250cc	2007													W6192 Head Gasket will increase CR 1/2 pt.					
V-Rod 1250cc (Will not fit V-Rod Destroyer) Use with stock stroke crankshaft (72mm)	2008 & up																		
Harley-Davidson® • 80 Cubic Inch																			
V-Rod VRSCA 1320cc	2002-2007	12:1	3.937 x 2.835	1437.0	4.250	ArmorGlide® Strutted Forging	Crankcase Machining			10055M10795 10056M10795 \$210.00	4250ZB	S618	W5590	W6022 Head Gasket Kit	Inverted Dome -11.5cc	1.780	0.195	1.540	0.165
Screamin Eagle V-Rod 1250cc	2006						Resleeve 3444FAH							W6165 Repl. O-Rings					
VRSCX V-Rod 1250cc	2007													W6192 Head Gasket will increase CR 1/2 pt.					
V-Rod 1250cc (Will not fit V-Rod Destroyer) Use with 1/4" stroke crankshaft (3.085")	2008 & up																		
Honda																			
VTX1800	2002-2008	8:1	101.0 x 112.0	1795.0	101.0	ArmorGlide®	Deglaze / Hone	CK232		40042M10000	10100XS	S657	W6045	W6166	Inverted Dish -39.0cc	1.900	0.075	1.900	0.075
Indian																			
Scout 1133cc	2015-2016	11.5:1	99.0 x 73.6	1133.0	99.00	ArmorGlide®	Deglaze / Hone			40137M09900	9900XS	S655	W5590		Flat Top -2.0cc	1.825	0.125	1.825	0.125
Yamaha																			
BOLT / BOLT R-SPEC V-Star 950 V-Star 950 Tourer	2014-2016 2009-2015 2009-2015	10.5:1	85.0 x 83.0	942.0	85.0	ArmorGlide®	Deglaze / Hone		CK237	40115M08500	8500XX	S624	CW28		Inverted Dome -2.0cc	1.250	0.060	1.250	0.060
Yamaha																			
Road Star 1600	1999-2003	10.5:1	95.0 x 113.0	1602.0	95.0	ArmorGlide®	Deglaze / Hone		CK177 Kits contain front and rear piston	4878M09500 front 4879M09500 rear	9500XY	S655	W5590	W6367	Positive Dome +22cc	1.600	0.120	1.360	0.120

Piston Profiles



1200 Buell • 73 Cubic Inch
4728P Series



1200 Buell • 88 Cubic Inch
4832P Series



1200 Buell • 88 Cubic Inch
4830P Series



Harley 1200 Sportster • 88 C.I. • 10.5:1
4830P Series



Harley 1200 Panhead/Shovelhead • 74 C.I.
4012P Series



Harley 1340 Shovelhead • 80 C.I. • 7:1
4729P Series



Harley XR750 - Race only
10574M08031



Harley 883 EVO Sportster
4691P Series



Harley 883 EVO Sportster
4718P Series



Harley 1340 Shovelhead • 80 C.I. • 8.5:1
4970P Series



Harley 1340 Shovelhead • 80 C.I. • 9.5:1
4730P Series



Harley 1340 EVO Big Twin • 80 C.I. • 8.5:1
4722P Series



Harley 883 EVO Sportster
4719P Series



Harley 1000 Iron Sportster
4011P Series



Harley 1100/1200 EVO Sportster • 9:1
4720P Series



Harley 1340 EVO Big Twin • 80 C.I. • 10:1
4724P/4725P Series



Harley 1340 EVO Big Twin • 80 C.I. • 9.5:1
4722P Series



Harley 1340 EVO Big Twin • 80 C.I. • 10.5:1
4778P/4779P Series



HD 1100/1200 EVO Sportster • 10.5:1
4721P Series



Harley 1200 Sportster • 73 C.I. • 10.5:1
4891P Series



Harley 1200 Sportster • 73 C.I. • 12:1
4832P Series



Harley Twin Cam • 88 Cubic In. • 10.5:1
4995P Series



Harley Twin Cam • 95 Cubic Inch • 9:1
4994P Series



Harley Twin Cam • 95 Cubic In. • 9.5:1
4999P Series

Piston Profiles



Harley Twin Cam • 95 Cubic In. • 10.5:1
4993P Series



Harley Twin Cam • 97 Cubic Inch • 10:1
40147PS



Harley Twin Cam • 100 Cubic In. • 10.5:1
4925P Series



Harley Twin Cam • 124 Cubic In. • 10.5:1
40022P/40023P Series



Harley Twin Cam • 131 Cubic In. • 10.5:1
40100P/40101P Series



Harley V-Rod • 80 Cubic In. • 12:1
4792M/4793M Series



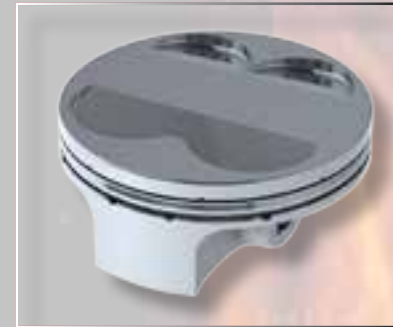
Harley Twin Cam • 107 Cubic In. • 10.5:1
4923P Series



Harley Twin Cam • 113 Cubic In. • 10.5:1
40024P/40025P Series



Harley Twin Cam • 103 Cubic In. • 9:1
4996P Series



Harley V-Rod • 80 Cubic In. • 14:1
9891M/9892M Series



Harley V-Rod • 80 Cubic In. • 12:1
10055M/10056M Series



Honda VTX1800 • 8:1
40042M10000



Harley Twin Cam • 103 Cubic In. • 9.6:1
4998P Series



Harley Twin Cam 1999-14 • 103 C.I. • 10.5:1
4997P Series



Harley Twin Cam 2015 • 103 C.I. • 10.5:1
40126P Series



Indian Scout 1133cc • 11.5:1
40137M09900



Yamaha Bolts, V-Stars 950 • 10.5:1
40115M08500



Yamaha Road Star 1600 • 10.5:1
4878M/4879M Series



Harley Twin Cam • 106 Cubic In. • 10.5:1
40138P Series



Harley Twin Cam • 106 Cubic In. • 10:1
40148PS



Harley Twin Cam • 117 Cubic In. • 10.5:1
40149PS

Gaskets

In addition to our High-Performance Top End Kits (listed throughout our catalog), Wiseco offers Harley® replacement gaskets to meet all of your sealing needs.

- All of our gaskets meet or exceed OEM quality.
- Composite head gaskets include a steel core and a state-of-the-art facing material, featuring a patented transparent coating, to improve the sealing property and prevent corrosion.
- Metal head gaskets are made of stainless steel, featuring a patented thermoplastic coating, to help compensate for all possible micro-imperfections of the engine surfaces.
- Our fiber gaskets are made from materials providing the best mechanical and tensile strength resistance.
- Gaskets come with anti-stick silicon beading (where applicable).



Evolution® Big Twin

Wiseco P/N	OEM P/N	Gasket Type	Description	List
W6701	25225-70K	Cam Gear change Gasket kit	1340 FL/FLT/FXFXR 4 & 5-Speed 1984-91	\$17.33
W6791	17035-83A	Complete Set w/ Oil Seals	1340 FXST/FXWG/FXSB/FXEF 4 & 5-Speed 1984-88	\$102.15
W6792	17041-92/92A	Complete Set w/ Oil Seals	1340 Evo® 1992-98	\$90.58
W6793	17035-84	Complete Set w/ Oil Seals	1340 FLT/FXR 5-Speed 1984-86	\$102.13
W6794	17035-83B	Complete Set w/ Oil Seals	1340 FLT/FXR 4-Speed 1984-91	\$102.13
W6795	17035-89	Complete Set w/ Oil Seals	1340 All Softails®, FXDB/S Dyna 1989-91	\$102.13
W6732		Engine Oil Seal Set	1340 FL/FLT/FX/FXR 4 & 5-Speed 1984-91/1340 1992-Up	\$11.56
W6742	45849-84A	Fork Oil Seals Set	1340 FXRS/FXR/FXR/FXSB/FXEF 1984-03	\$15.43
W6744	45849-87	Fork Oil Seals Set	1200 FXR/FXDB/FXLR/Dyna® 1988-91	\$18.52
W6738	45849-84K	Front Fork Air Control Gasket Set	1340 FL/FLT/FX/FXR 4 & 5-Speed 1984-91/1340 1992-Up	\$13.50
W6746	27002-89K	Manifold Seal Ring kit	1340 FLT/FXR 5-Speed 1984-86	\$8.48
W6696	81-FL	Oil Pump Gasket Set	FL/FLH/FX/FLT/FXR Softail 1981-91	\$11.96
W6697		Oil Pump Gasket Set	(Paper) S & S Pre-1991	\$7.34
W6698		Oil Pump Gasket Set	(Mylar) S & S Pre-1991	\$7.70
W6699		Oil Pump Gasket Set	(Paper) S & S 1992-Up	\$7.34
W6700		Oil Pump Gasket Set	(Mylar) S & S 1992-Up	\$7.70
W6704	60539-89KX	Primary Cover Set	All Softail & Dyna 1989-Up (Silicone Beaded)	\$48.18
W6706	34901-85K	Primary Cover Set	FXR & FLT Models 1985-94	\$40.46
W6707	34901-94K	Primary Cover Set	FLT, FLHT, FXR Models 1995-Up	\$36.61
W6708	60539-89K	Primary Cover Set	All Softail & Dyna 1989-Up	\$34.42
W6717	33031-85	Transmission Set w/ Oil Seals 5-Speed	1340 FL/FLT/FX/FXR 4 & 5-Speed 1984 - 92	\$50.09
W6718	33031-93	Transmission Set w/ Oil Seals 5-Speed	1340 FLH/FLT/FXR, Dyna Softail Evo Mod. 1993-Up	\$34.98
W6719	33031-91	Transmission Set w/ Oil Seals 5-Speed	1340 Softail & Dyna Mod. 1991-Up	\$33.54

Evolution Sportster®

Wiseco P/N	OEM P/N	Gasket Type	Description	List
W6777	17026-86	Complete Set w/ Oil Seals	XL 883 1986-90	\$101.75
W6778	17026-91	Complete Set w/ Oil Seals	XLH 883 1991-Up	\$100.22
W6785	17026-86A	Complete Set w/ Oil Seals	XLH 1100 1986-87	\$101.75
W6786	17026-88	Complete Set w/ Oil Seals	XLH 1200 1988-90	\$101.75
W6787	17026-91A	Complete Set w/ Oil Seals	XLH 1200 1991-Up	\$94.97
W6726		Engine Oil Seal Set	XLH 883/1100/1200 1986-90	\$19.28
W6727		Engine Oil Seal Set	XLH 883/1200 1991-Up	\$19.27
W6743	45849-84A	Fork Oil Seals Set	XL/XLH 883-1100-1200 (Showa 35mm) 1984-Early 1987	\$15.42
W6745	45849-87	Fork Oil Seals Set	XL/XLH 883-1100-1200 (Showa 39mm) Late 1987-Up	\$18.50
W6693	17030-89	Rocker Cover Gasket Set	Rocker Cover Gasket Set 883-1200 1986-90	\$39.51

Panhead®

Wiseco P/N	OEM P/N	Gasket Type	Description	List
W6774	17028-48	Complete Set without Oil Seals	74" FL/FLH 1948-65	\$38.54
W6747	17955-48FL	Cork Pushrod Seal Set	74" FL/FLH 1948-65	\$3.11
W6739	45849-49	Fork Oil Seals Set	74" FL/FLH 1948-65	\$12.33
W6720	35230-39K	Transmission Main Seal Set	74" FL/FLH 1948-65	\$12.33
W6712	33031-36	Transmission Set w/ Oil Seals	74" FL/FLH 1948-65	\$15.42

Shovelhead®

Wiseco P/N	OEM P/N	Gasket Type	Description	List
W6692	16776-63special	Base Gasket Set	All Shovelheads 1963-84 2 pcs. (rubber coated embossed steel) .034"	\$23.12
W6796	16777-66 special	Base Gasket Set	Front and rear Base gasket Big bore 3-5/8" Shovelhead 1966-84	\$5.98
W6702	25225-70K	Cam Gear change Gasket kit	All Shovelheads 1970-Up	\$17.35
W6788	17029-70	Complete Set w/ Oil Seals	74" & 80" FL/FLH/FX/FXE/FXS Shovelhead 1970-83	\$50.09
W6789	17029-70A	Complete Set w/ Oil Seals	74" & 80" FL/FLH/FX/FXE/FXS 1970-84	\$88.65
W6790	17029-80	Complete Set w/ Oil Seals	80" All FLT Shovelhead 1980-84	\$52.02
W6748	17955-48FL	Cork Pushrod Seal Set	FL/FLH/FLT Models 1948-79	\$3.09
W6733		Engine Oil Seal Set	74" & 80" FL/FLH/FX/FXE/FXS Shovelhead 1970-84	\$11.56
W6734	45849-75	Fork Oil Seals Set	FX Models with 35 mm. Showa Forks 1975-83	\$14.65
W6740	45849-49	Fork Oil Seals Set	FL Models 41 mm. 1949-early 1977	\$12.33
W6741	45849-77	Fork Oil Seals Set	FL Models 'L77-84 & FXWG, FLHT & FLT models 1980-83 with 41mm forks.	\$15.42
W6695	68-FL	Oil Pump Gasket Set	FL/FLH/FXB/FXEF/FXJ/FXS/FXSG/FXEF 1968-80	\$11.96
W6703	60538-81K	Primary Cover Set	FXE/FLH 1966-86	\$30.83
W6705	34901-79K	Primary Cover Set	All 5-Speed Shovelhead models. 1966-84	\$27.00
W6709	60538-85K	Primary Cover Set	FXE/FLH 1966-86 with seals	\$34.66
W6773	11133-FLH	Pushrod Tube O-Ring Seal Set	FL/FLH 1980-83	\$3.86
W6721	35230-39K	Transmission Main Seal Set	74" FL/FLH Shovelheads 1936-69 4-Speed	\$12.32
W6722	37741-67K	Transmission Main Seal Set	74" & 80" FL/FLH/FX/FXE/FXS 1970-79 4-Speed	\$10.81
W6723	37741-82K	Transmission Main Seal Set	74" & 80" FL/FLH/FX/FXE/FXS 1980-85 4-Speed	\$11.56
W6724	12044-AK	Transmission Main Seal Set	FLT/FLHT/FXR/FXRS 1980-84 5-Speed	\$15.43
W6713	33031-36	Transmission Set w/ Oil Seals	74" FL/FLH Shovelheads 1936-69 4-Speed	\$19.27
W6714	33031-70	Transmission Set w/ Oil Seals	74" & 80" FL/FLH/FX/FXE/FXS 1970-79 4-Speed	\$19.27
W6715	33031-80	Transmission Set w/ Oil Seals	74" & 80" FL/FLH/FX/FXE/FXS 1980-85 4-Speed	\$19.27
W6716	33031-82	Transmission Set w/ Oil Seals	FLT/FLHT/FXR/FXRS 1980-84 5-Speed	\$27.06

Sportster®

Wiseco P/N	OEM P/N	Gasket Type	Description	List
W6776	XR-750	Complete Set w/ Oil Seals	XR 750 1972-Up	\$77.08
W6779	17026-71	Complete Set w/ Oil Seals	900 XL/XLH/XLCH 1957-71	\$75.93
W6780	17026-72	Complete Set w/ Oil Seals	1000 XLH, XLCH 1972-Early 1973	\$48.56
W6781	17026-73	Complete Set w/ Oil Seals	1000 XLH/XLCH Late 1973-76	\$49.31
W6782	17026-79	Complete Set w/ Oil Seals	1000 XLH/XLCH/XLS 1977-81	\$63.59
W6783	17026-82	Complete Set w/ Oil Seals	1000 XL/XLH/XLS 1982-85	\$53.96
W6784	17026-83	Complete Set w/ Oil Seals	XR - 1000 Only 1983	\$57.04
W6725		Engine Oil Seal Set	XR 750 1972-Up	\$46.26
W6728		Engine Oil Seal Set	900 XL/XLH/XLCH 1957-71	\$30.84
W6729		Engine Oil Seal Set	1000 XLH, XLCH 1972-Early 1973	\$19.28
W6730		Engine Oil Seal Set	1000 XL/XLH/XLCH/XLS Late 1973-85	\$17.35
W6731		Engine Oil Seal Set	XR - 1000 Only 1983	\$38.54
W6735	45849-75	Fork Oil Seals Set	1000 XLH/XLCH 1977-81	\$14.65
W6736	45849-71	Fork Oil Seals Set	900 XL/XLH/XLCH 1957-71	\$11.56
W6737	45849-73	Fork Oil Seals Set	1000 XLH, XLCH 1972-73	\$15.42
W6772	11101-XL	Pushrod Tube O-Ring Seal Set	1000 XL/XLH/XLCH/XLS 1977-85	\$3.08

Twin Cam®

Wiseco P/N	OEM P/N	Gasket Type	Description	List
W6694	17045-99	Cam Service Sets	kit 1999-Up all Twin Cam	\$51.25
W6775	17053-99	Complete Set without Oil Seals	kit 1999-Up all Twin Cam	\$72.48
W6710	33031-99	Transmission Set w/ Oil Seals	Twin Cam 88 Dyna 1999-Up	\$31.44
W6711	33031-99	Transmission Set w/ Oil Seals	Twin Cam 88 FLT 1999-Up	\$31.44

Rings

All Wiseco rings below can be used in cast iron, except XN Ring Package, which is designed for use in Nikasil Bores only.					
Type	Price	Bore Range	Top Ring	2nd Ring	Oil Ring (3-piece oil assemblies)
GFX	\$37.80	93.54 - 105.61mm (3.683- 4.158")	1.2mm (.047") Alloy steel gas nitrided, positive twist	1.2mm (.047") Cast iron phosphate coated, taper faced, under hook.	3mm (.118") 3-piece oil assembly: Stainless steel flex-vent spacer, soft nitride rails
VA	\$29.55	95-102mm (3.740-3.977")	1.2mm (.047") Alloy steel ferrox coated, chrome faced	1.5mm (.057") Cast iron phosphate coated, taper faced	3mm (.118") Stainless steel spacer, chrome faced rails
VM	\$24.55	93.54 - 105.61mm (3.683- 4.158")	1.2mm (.047") Alloy steel gas nitrided, positive twist	1.2mm (.047") Cast iron phosphate coated, taper faced, under hook.	2mm (.079") 3-piece oil assembly: Stainless steel flex-vent spacer, chrome faced rails
X	\$33.10	80.97 - 92.83mm (3.188 - 3.655")	1.58mm (.0625") Cast iron moly barrel faced	1.58mm (.0625") Cast iron taper faced, reverse torsion	3.9mm (.1525") Stainless steel flex-vent spacer, chrome faced rails
XG	\$33.10	75-83mm (2.953-3.268")	1mm (.039") Alloy steel ferrox coated, chrome faced	1mm (.039") Nodular iron phosphate coated, taper faced	2mm (.079") Stainless steel flex-vent spacer, chrome faced rails
XH	\$33.10	95-102mm (3.740-3.977")	1.2mm (.047") Alloy steel ferrox coated, chrome faced	1.5mm (.057") Cast iron phosphate coated, taper faced	4mm (.057") Stainless steel spacer, chrome faced rails
XK	\$29.55	98.42 - 99.19mm (3.875 - 3.905")	1.5mm (.057") Cast iron plasma moly faced	1.5mm (.057") Cast iron reverse torsion taper faced	2.5mm (.098") Stainless steel flex-vent spacer, chrome faced rails
XN	\$33.10	96.84mm (3.8125")	1.5mm (.057") Cast iron plasma moly faced	1.5mm (.057") Cast iron reverse torsion taper faced	3mm (.118") 3-piece oil assembly: Stainless steel flex-vent spacer, unplated rails
XP	\$33.10	92.01 - 96.01mm (3.663 - 3.780")	1.5mm (.057") Cast iron plasma moly faced	1.5mm (.057") Cast iron reverse torsion taper faced	3mm (.118") Stainless steel flex-vent spacer, chrome faced rails
XS	\$33.10	95 - 104mm (3.740 - 4.094")	1.2mm (.047") Alloy steel ferrox coated, chrome faced	1.5mm (.057") Cast iron phosphate coated, taper faced	2mm (.079") Stainless steel flex-vent spacer, chrome faced rails
XV	\$39.95	100mm (3.937")	1.0mm (.039") Alloy steel gas nitrided, positive twist	1.5mm (.057") Cast iron taper faced	2mm (.079") 3-piece oil assembly: Stainless steel flex-vent spacer, soft nitride rails
XY	\$34.95	95-100mm (3.740 - 3.937")	1.2mm (.047") Alloy steel ferrox coated, chrome faced	1.5mm (.057") Cast iron phosphate coated, taper faced	3mm (.118") Stainless steel flex-vent spacer, chrome faced rails
ZB	\$55.08	107.95mm (4.250)	1.1mm (.043") Ductile iron, plasma moly face	No second ring	2mm (.079") Stainless steel flex-vent spacer, chrome faced rails



Pins & Honing Brushes, Decals & Banners

Piston Pins							
Part #	OD Inches	Length Inches	ID Inches	Weight grams	Str. Wall Tpr. Wall	Surface	Price
Harley-Davidson Pins							
S530	0.7913	2.200	0.512	80.50	SW	Chromed	\$18.13
S521	0.7913	2.600	0.512	95.30	SW	Chromed	\$18.13
S535	0.7913	2.835	0.512	103.90	SW	Chromed	\$18.13
S743	0.7913	2.000	0.555	63.50	SW	Super-finish	\$19.36
S572	0.7920	2.000	0.512	73.10	SW	Chromed	\$18.13
S534	0.7920	2.200	0.512	102.70	SW	Chromed	\$18.13
S548	0.7920	2.825	0.512	102.70	SW	Chromed	\$18.13
S618	0.8661	2.000	0.543	89.50	SW	Super-finish	\$17.67
S594	0.9270	2.250	0.630	104.80	SW	Chromed	\$18.13
S756	0.9270	2.500	0.627	116.60	SW	Super-finish	\$16.04
Metric Cruiser Pins							
S655	0.8660	2.250	0.551	101.00	SW	Super-finish	\$17.67
S657	0.9450	2.250	0.630	112.00	SW	Chromed	\$11.58



Nylon Soft Hone Brushes					
Description mm	Description Inches	Part #	Brush Length	Overall Length	Price
45-57mm	1.77"-2.24"	W6075	2"	10"	\$49.40
57-70mm	2.24"-2.76"	W6076	3"	10"	\$49.40
63-76mm	2.48"-2.99"	W6077	4"	14"	\$64.73
76-89mm	2.99"-3.50"	W6078	4"	14"	\$64.73
89-102mm	3.50"-4.02"	W6079	4"	14"	\$72.83



Decals (check on-line for complete line)		
Part #	Description	Price
D11	2" x 6 1/2" Decal	\$0.25
D12	4 1/2" x 10" Window Decal	\$1.00
D14	2" x 5" Wiseco Patch	\$0.75
D17	2" x 12" Automotive Decal	\$0.50
D18A	9.36" x 2.77" Fork Decal (Blk w/blk & red icon)	\$4.00
D19	9 1/2" Cycle Fender Decal	\$1.00
D21	2 3/4" x 6 1/2" Pro Tru Decal	\$0.50
D22	Sheet of 2, 4 1/2" Decals, plus 2 icons	\$1.00
D24	18.5" x 3.25" Auto/Trailer Decal	\$5.00
D58	Skull decal - 2.5" diameter	\$2.00
Banners		
W5497	10' x 3' Wiseco black and red on white	\$29.86
Accessories		
W5865	Piston Key Ring (great jacket zipper pull)	\$4.95
W6899	Umbrella (large & durable)	\$29.95
Apparel		
Check on-line for our latest Wiseco apparel.		



WISECO TERMS AND CONDITIONS OF SALE

1. **Parties.** [Wiseco Performance Products], will be referred to as "Seller," and the company purchasing as indicated on the front hereof will be referred to as "Purchaser". All materials, goods, or work described on the front hereof, regardless of type, will be referred to as "Products".

2. **Terms and Conditions.** Seller's assent to contract is expressly conditional on Purchaser's acceptance of these Terms and Conditions. Notice is hereby given of Seller's objection to any Terms and Conditions in addition to or different from those herein, including without limitation any terms or conditions contained within any written acceptance, order confirmation, purchase order or similar document related to this transaction that may be issued by Purchaser. In the event Purchaser issues a purchase order or orders covering the items contained in this Agreement, such purchase order will operate as Purchaser's acceptance of this offer, but the parties hereby agree that any terms and conditions attached to such purchase order or orders shall have no legal effect, nor shall they be binding upon Seller. Deviation from these Terms and Conditions, including terms and conditions in addition to or different than those contained herein, can only take place by written instrument signed by one of Seller's officers.

3. **Price Adjustments; Payments.** The prices stated herein do not include any sales, use, or other taxes unless so stated specifically. Such taxes will be added to invoice prices in those instances in which Seller is required to collect them from Purchaser; provided, however, that if Seller does not collect any such taxes and is later asked by or required to pay the same to any taxing authority, Purchaser will make such payment to Seller or, if requested by Seller, directly to the taxing authority. At Seller's option, prices may be adjusted to reflect any increase in Seller's costs resulting from state, federal or local legislation, price increases from Seller's suppliers, or any change in the rate, charge, or classification of any carrier.

Unless otherwise specified by Seller, all prices are F.O.B. Seller's facility in Mentor, Ohio (Seller's Facility), and payment will be net/cash 30 days from date of invoice. Invoices unpaid and past due may be subject to a service charge on the unpaid balance at an interest rate equal to the lesser of 18% per annum or the maximum allowable interest rate under applicable law, and Purchaser shall be responsible and liable for all expenses incurred by Seller in collection, including reasonable attorneys' fees.

4. **Delivery Dates; Title and Risk; Shipment.** All delivery dates are approximate, and Seller shall not be responsible for any damages of any kind resulting from any delay. Regardless of the manner of shipment, title to any products and risk of loss or damage thereto shall pass to Purchaser upon tender to the carrier at Seller's Facility, except in those instances in which delivery may be made by Seller's vehicles. Unless otherwise stated herein, Purchaser may exercise its judgment in choosing the carrier and means of delivery. No deferment of shipment at Purchaser's request beyond the respective dates indicated will be made except on terms that will indemnify, defend and save Seller harmless against all loss and additional expense, including, but not limited to demurrage, handling, storage and insurance charges.

5. **Warranty.** WISECO PISTON COMPANY, INC., LIMITED PISTON WARRANTY. WISECO warrants this product will be free from defects in material and workmanship for thirty (30) days following date of original purchase. If the product is found by WISECO to be defective, such products will, at WISECO'S option, be replaced or repaired at cost to WISECO. All products alleged by Purchaser to be defective must be returned to WISECO, postage prepaid, within thirty (30) days warranty period.

This limited warranty does not cover labor or other costs or expenses incidental to the repair and/or replacement of products or parts.

This limited warranty does not apply to any product which has been used in a hi-performance application, or racing, or is subject to misuse, mishandling, misapplication, neglect (including but not limited to improper maintenance), accident, improper installation, modification (including but not limited to use of unauthorized parts or attachments), or adjustment or repair performed by anyone other than WISECO.

The parties hereto expressly agree that the purchaser's sole and exclusive remedy against WISECO shall be for the repair or replacement of the defective product as provided in this limited warranty. This exclusive remedy shall not be deemed to have failed of its essential purpose so long as WISECO is willing and able to repair or replace defective goods.

THIS LIMITED WARRANTY IS IN LIEU OF ALL OTHER WARRANTIES, EXPRESS OR IMPLIED, INCLUDING THOSE OF MERCHANTABILITY OR FITNESS FOR A PARTICULAR PURPOSE NOT EXPRESSLY SET FORTH HEREIN.

ANY PRODUCT WHICH MAY BE SOLD BY WISECO BUT WHICH IS NOT MANUFACTURED BY WISECO IS NOT WARRANTED BY WISECO, BUT IS SOLD ONLY WITH THE WARRANTIES, IF ANY, OF THE MANUFACTURERS THEREOF.

WISECO'S liability (whether under the theories of breach of contract or warranty, negligence or strict liability) for its products shall be limited to repairing or replacing parts found by WISECO to be defective, or at WISECO'S option, to refund the purchase price of such product. In no event shall WISECO be liable for incidental or consequential damages arising out of or in connection with the product. Consequential damages shall include, without limitation, loss of use, income or profit, or losses sustained as the result of injury (including death) to any person, or loss of or damage to property.

Any claim by purchaser regarding this product shall be deemed waived by the purchaser unless submitted in writing to WISECO within the earlier of (i) fifteen (15) days following the date Purchaser discovered, or by reasonable inspection should have discovered, any claimed breach of this limited warranty, or (ii) thirty (30) days following the date of original purchase. Any cause of action for breach of this limited warranty shall be brought within six months from the date the alleged breach was discovered or should have been discovered, whichever occurs first.

This limited warranty gives you specific legal rights, and you may also have other rights which vary from state to state.

Return any defective Wiseco product directly to Wiseco for warranty consideration. All defective claims to Wiseco Piston, Inc. should include the following information: (All RMA's are subject to a 20% restocking fee.)

1. Call Wiseco for RMA (Return Materials Authorization) number at 800-321-1364 or 440-951-6600.
2. The possible defective product being returned should be labeled with the Wiseco part number.
3. Include a copy of invoice, name, and address of supplier for proof of purchase.
4. A brief description of product issue.
5. Wiseco reserves the right to request additional engine related products in order to evaluate a claim.

If the product issue is found to be valid by Wiseco, the Wiseco Customer Service department will advise the distributor as to the amount of responsibility for the claim and will settle all claims directly with the distributor.

SHIP RETURNS "PRE PAID" TO (Include RMA# on the box & packing list):
- Wiseco Piston Company, Inc. • 7201 Industrial Park Blvd. • Mentor, Ohio 44060-5396
- In Canada: Wiseco Piston Canada, Inc. • 948 Keyes Drive, PO Box 1513 • Woodstock, ONT. N4S 0A7

6. **Claims; Commencement of Actions.** Purchaser shall promptly inspect all Products upon delivery. No claims for shortages will be allowed unless such shortages are reported to Seller within 10 days after delivery. No other claims against Seller will be allowed unless asserted in writing within 60 days after delivery or, in the case of an alleged breach of warranty, within 60 days after the date within the warranty period on which the defect is or should have been discovered by Purchaser.

Any action based upon breach of this contract or upon any other claim arising out of this sale (other than an action by Seller for any amount due to Seller by Purchaser) must be commenced within one year from the date of the tender of delivery by Seller or, in the case of a cause of action based upon an alleged breach of warranty, within one year from the date within the warranty period on which the defect is or should have been discovered by Purchaser. Seller and Purchaser agree to submit any dispute arising from the performance or failure to perform under this Agreement to binding arbitration under the commercial arbitration rules of the American Arbitration Association. The arbitrator shall have the power to award damages but shall not in any case award exemplary or punitive damages. The decision of the arbitrator may be entered into judgment in any court of competent jurisdiction.

7. **LIMITATION OF LIABILITY.** IN NO EVENT SHALL SELLER BE LIABLE TO PURCHASER FOR ANY SPECIAL, INDIRECT, INCIDENTAL OR CONSEQUENTIAL DAMAGES ARISING OUT OF, OR AS THE RESULT OF, THE SALE, DELIVERY, NON-DELIVERY, SERVICING, USE OR LOSS OF USE OF THE PRODUCTS OR ANY PART THEREOF, OR FOR ANY CHARGES OR EXPENSES OF ANY NATURE INCURRED WITHOUT SELLER'S WRITTEN CONSENT, EVEN THOUGH SELLER HAS BEEN NEGLIGENT. IN NO EVENT SHALL SELLER'S LIABILITY UNDER ANY CLAIM MADE BY PURCHASER EXCEED THE PURCHASE PRICE OF THE PRODUCTS IN RESPECT OF WHICH DAMAGES ARE CLAIMED.

8. **Contingencies.** Seller shall not be liable for any default or delay in performance if caused, directly or indirectly, by acts of God; war; force of arms; fire; the elements; riot; labor disputes; picketing or other labor controversies; sabotage; civil commotion; accidents; any governmental action, prohibition or regulation; delay in transportation facilities; shortages or breakdown of or inability to obtain or non-arrival of any labor, material or equipment used in the manufacture of the Products; failure of any party to perform any contract with Seller relative to the production of the Products; or from any cause whatsoever beyond Seller's control, whether or not such cause be similar to those enumerated. Seller shall promptly notify Purchaser of the happening of any such contingency and of the contemplated effect thereof on the manufacture and delivery of the Products.

9. **Loss to Purchaser's Property; Patent, Trademark, or Copyright Infringement, Etc.** Seller shall not be liable for, and shall have no duty to provide insurance against, any damage or loss to any goods or materials of Purchaser that are used by Seller in connection with this order. Where any Product is manufactured from patterns, plans, drawings, or specifications furnished by Purchaser, Purchaser shall indemnify, defend and save Seller harmless from all loss, damage, and expense arising out of any suit or claim against Seller for infringement of any patent, trademark, or copyright because of Seller's manufacture of such Product or because of the use or sale of such Product by any person. Upon Seller's request, Purchaser shall appear in and assume the defense of the litigation.

10. **Sellers' Specifications, Technical Data, Etc.** Any specifications, drawings, plans, notes, instructions, engineering notices, technical data or other documents disclosed and/or furnished to Purchaser by Seller shall be deemed to be incorporated herein by reference the same as if fully set forth. Seller shall at all times retain title to all such documents. Purchaser shall hold such documents in confidence and not disclose them to any party other than Seller or a party duly authorized by Seller. Upon Seller's request, Purchaser shall promptly return to Seller all such documents and copies thereof.

11. **Purchaser's Obligation; Rights of Seller.** To secure payment of all sums due hereunder or otherwise, Seller shall retain a security interest in the goods delivered hereunder and this contract shall be deemed a Security Agreement under the Uniform Commercial Code. Purchaser authorizes Seller as its attorney to execute and file on Purchaser's behalf all documents Seller deems necessary to perfect such security interest. If Seller shall at any time doubt Purchaser's financial responsibility, Seller may demand adequate assurance of due performance or decline to make any further shipments except upon receipt of cash payment in advance of security. If Seller demands adequate assurance of due performance and the same is not forthcoming within 10 days after the date of Seller's demand, Seller may, at its option, (i) continue to defer further shipments under this order and/or any other order from Purchaser that has been accepted by Seller until adequate assurance is received, or (ii) cancel this order and/or any other orders from Purchaser that have been accepted by Seller and recover damages. If Purchaser fails in any way to fulfill the terms and conditions on the front or the back hereof, Seller may defer further shipments until such default is corrected or cancel this order and recover damages. Seller shall have a security interest in, and lien upon, any property of Purchaser in Seller's possession as security for the payment of any amounts owing to Seller by Purchaser. In the event Seller institutes a legal proceeding against Purchaser to collect any monies due Seller hereunder, or if Seller successfully defends any lawsuit instituted by Purchaser, whether based on contract, tort or any other legal theory of recovery, then Seller shall be entitled to recover its costs and expenses, including reasonable attorney's fees, from Purchaser.

12. **Liability or Responsibility.** Seller assumes no liability or responsibility for any acts, misuse of product, advertising, violations of any local, state or federal regulations or laws violated by Purchaser. Purchaser assumes all responsibility for its acts and is responsible for researching local, state or federal regulations relating to the sale or use of Seller's products.

13. **Improper Use and Indemnity.** Purchaser shall indemnify, defend, and hold Seller harmless from any claim, liability, damages, lawsuits, and costs (including reasonable attorney's fees), whether for personal injury, property damage or other, brought by or incurred by Purchaser, Purchaser's employees, or any other person, arising out of improper selection, improper application or other misuse of products purchased by Purchaser from Seller.

14. **Cancellations.** After acceptance by Seller, orders shall not be subject to cancellation by Purchaser except with Seller's prior written consent and upon terms that will indemnify, defend and save Seller harmless against all direct, incidental and consequential loss or damage.

15. **Limitation on Assignment.** Purchaser may not assign its rights or obligations under this Agreement without the prior written consent of Seller. Any purported assignment of such rights or obligations without such consent shall be void.

16. **Export.** If the Products are to be exported, this order is subject to Seller's ability to obtain export licenses and other necessary papers within a reasonable period. Purchaser will furnish all Consular and Custom declarations and will accept and bear all responsibility or penalties resulting from errors and omissions thereon. Purchaser shall not re-export the Products or any goods or items that incorporate the Products if the re-export would violate United States export laws.

17. **Equal Opportunity Clause.** This clause applies only in the event that the Products are to be used in whole or in part for the performance of government contracts and where dollar value of said Products exceeds, or may in any one year exceed \$10,000:

"In connection with the performance of work under this contract, the contractor (subcontractor) agrees not to discriminate against any employee or applicant for employment because of race, color, religion, sex, or national origin. The aforesaid provision shall include, but not be limited to, the following: employment, upgrading, demotion, or transfer; recruitment or recruitment advertising; layoff or termination; rates of pay or other forms of compensation; and selection for training, including apprenticeship. The contractor (subcontractor) agrees to post hereafter in conspicuous places, available for employees and applicants for employment, notices to be provided by the contracting officer setting forth the provisions of this nondiscrimination clause."

"The provisions of the Equal Opportunity Clause, as promulgated by Executive Order 11246 dated "September 24, 1965, as amended, are incorporated herein by reference."

18. **Other Rights or Remedies.** Except as otherwise provided herein, any rights or remedies granted hereunder to Seller shall be in addition to, and not in lieu of, any other rights or remedies at law or in equity.

19. **Entire Agreement.** This Agreement contains the entire agreement between Purchaser and Seller and constitutes the final, complete and exclusive expression of the terms of the agreement. All prior or contemporaneous written or oral agreements or negotiations with respect to the subject matter are herein merged. No acknowledgment by Seller of, or reference by Seller to, or performance by Seller under, an order of Purchaser shall be deemed to be an acceptance by Seller of any such additional or contrary terms or conditions.

20. **Waiver and Severability.** No waiver of any provision of this order shall constitute a waiver of any prior, concurrent or subsequent breach of the same or any other provision. In the event that any provision hereof shall violate any applicable statute, ordinance, or rule of law, such provision shall be ineffective to the extent of such violation without invalidating any other provision hereof.

21. **Governing Law.** This Agreement and the sale and delivery of all Products hereunder shall be deemed to have taken place in and shall be governed and construed in accordance with the laws of the State of Ohio, as applicable to contracts executed and wholly performed therein and without regard to its conflicts of laws principles. Any claim arising from this Agreement shall be exclusively venue in Lake County, Ohio.

22. **Product Return Policy.** Wiseco allows customer returns of "shelf stock" products for up to 30 days from date of purchase for full refund excluding the cost of shipping. (Custom and "Build to Order" products do not apply). Returned products and packaging must be in "new" condition in order to be eligible for a refund and subject to Wiseco's final approval.

All product returns to Wiseco Performance Products should include the following information: (All RMA's are subject to a 20% restocking fee.)

1. Call Wiseco for RMA (Return Materials Authorization) number at 800-321-1364 or 440-951-6600.
2. Include a copy of invoice, name, and address.
3. Brief description of why product is being returned.

SHIP RETURNS "PRE PAID" TO (Include RMA# on the box & packing list):
- Wiseco Piston Company, Inc. • 7201 Industrial Park Blvd. • Mentor, Ohio 44060-5396
- In Canada: Wiseco Piston Canada, Inc. • 948 Keyes Drive, PO Box 1513 • Woodstock, ONT. N4S 0A7

V-Twin & Metric Cruiser



Snowmobile



Automotive



One Name. One Solution.®

Outboard Marine



K1 Cranks & Rods



European Auto



PowerSports



wiseco.com • 800-321-1364